

Decorations light box



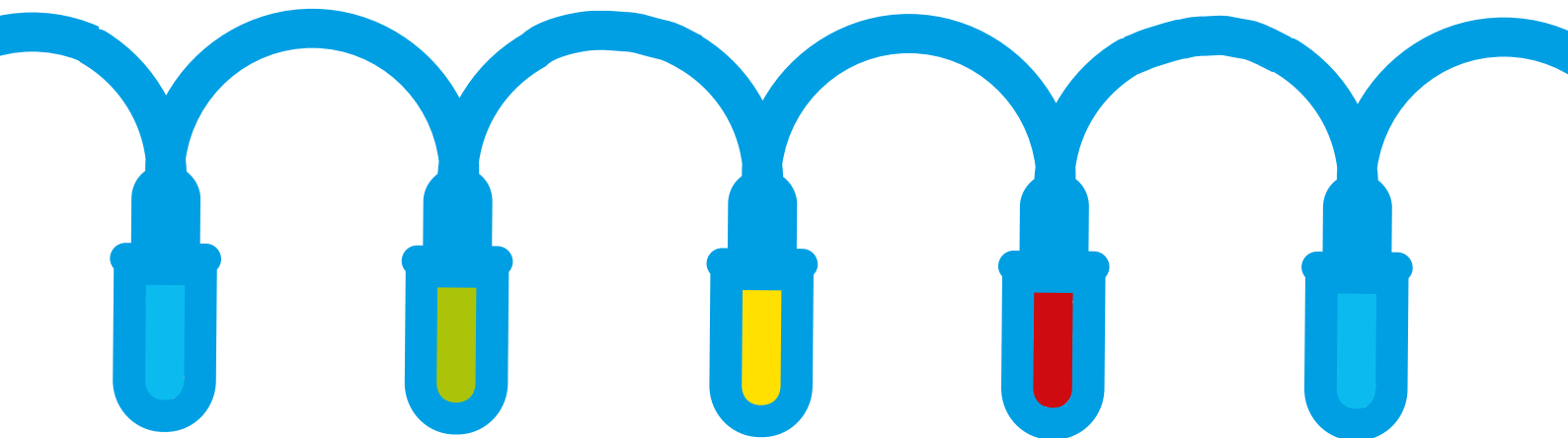
Family Maths Toolkit

The shop wants to design a new box for 36 Christmas lights – it will be a flat box. However only 4 colour lights will be used – red, gold, green and blue.

Can you design a flat box and arrange the lights so that no light of the same colour is adjacent to each other in any direction?

How many different designs can you find?

Can you try this for 24 lights?? Is it harder or easier?



Family comments:

Child comments:



Curriculum Link

Problem solving and working systematically.